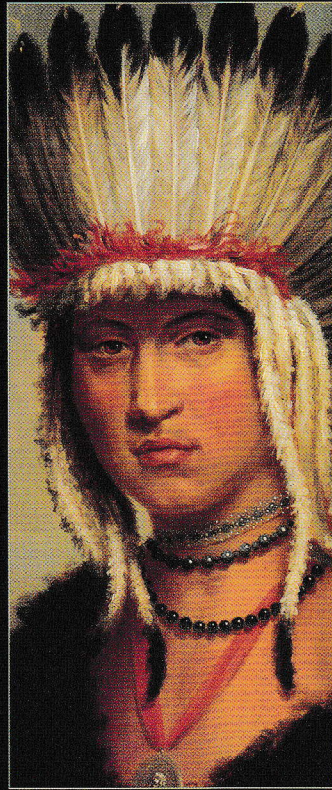




GILCREASE MUSEUM
TULSA, OKLAHOMA

Where the American West unfolds.



There is much to discover about the American West in the galleries and archives of Gilcrease Museum.

Retrace frontier trails through the eyes of such acclaimed masters as Frederic Remington, Charles M. Russell, Thomas Moran, and George Catlin — four of 400 artists whose paintings, sculptures, drawings, and prints make up the museum's permanent art collection.

Examine Native American art and artifacts that depict the American Indian lifestyle dramatically altered by the discovery, expansion, and settlement of the western frontier.

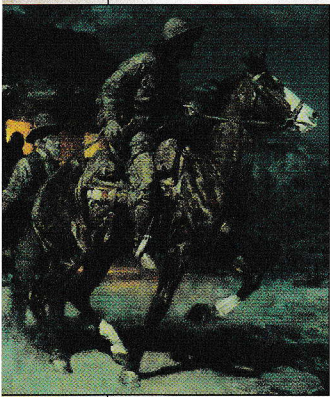
Delve into the distinguished archives of rare books, maps, photographs, historical manuscripts, and documents filled with accounts of bravado and determination.

The Gilcrease collection was amassed by Tulsa oil man Thomas Gilcrease (1890-1962).

As a member of the Muscogee (Creek) Nation, Gilcrease received an oil-rich land allotment south of Tulsa at the turn of the century, which ultimately provided him the resources to create his own art collection. Pride in his Native American heritage and interest in the history of the American West shaped the focus of his collection. He bought his first oil painting in 1912 and continued collecting for five decades.

In 1949 Gilcrease opened a museum at his Tulsa estate for public viewing of the art and artifacts he had acquired. He later deeded his entire collection and conveyed his estate to the City of Tulsa.

The 460-acre Gilcrease Museum grounds include his home, the museum, the mausoleum where he lies in rest, and a variety of gardens overlooking downtown Tulsa to the south and the Osage Hills to the north.



Frank T. Johnson, *The Pony Express*, oil on canvas

PERMANENT COLLECTION

Gilcrease Museum's permanent collection is the world's largest and most comprehensive collection of fine art, artifacts, and archives that tells the story of the American West. The depth of works pertaining to the early civilization of the Western Hemisphere is unparalleled. The museum draws upon this depth by continually rotating works and collection pieces so that each visit offers exciting new discoveries. The collection includes:

FINE ART

10,000 works including paintings, drawings, sculptures, and works on paper by 400 artists from colonial times to the present.

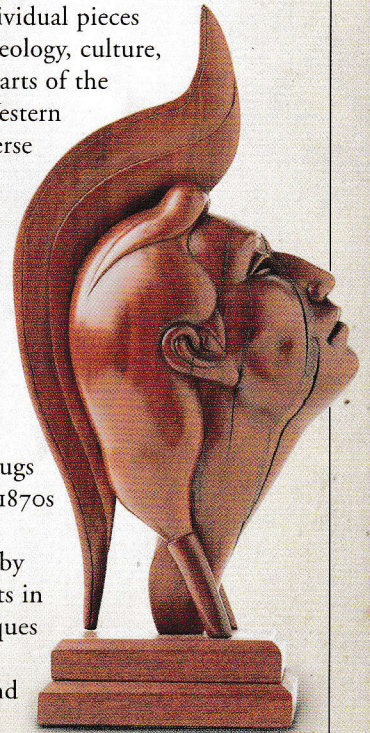
Among the artists whose works are displayed at Gilcrease are:

- George Catlin
- Frederic Remington
- Woody Crumbo
- Charles M. Russell
- Thomas Moran
- Willard Stone

ANTHROPOLOGY

More than 250,000 individual pieces that document the archeology, culture, history, and traditional arts of the native peoples of the Western Hemisphere. These diverse collections include:

- Ceramic and stone artifacts from the Aztec and Maya empires of Mexico and Mound Builder civilizations of the American Midwest
- A comprehensive collection of Navajo rugs and jewelry from the 1870s through today
- Contemporary works by Native American artists in the traditional techniques of beadwork, feather work, ribbon work, and metal smithing



Willard Stone, *The Appeal*, wood - cherry

AMENITIES

TOURS

Guided tours are offered daily at 2 p.m., or by special arrangement. Gallery tours for hearing- and vision-impaired visitors are set up by appointment, as well as tours of the gardens. The museum and gardens are accessible to the physically challenged, and wheelchairs and strollers are available. Please call the tour office at 918.596.2712 with special requests two weeks in advance of your visit.

MUSEUM SHOP

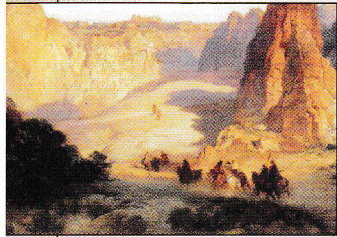
The museum shop features unique gifts and a wonderful selection of books, prints, jewelry, pottery, baskets, kachinas, and more. For information, call 918.596.2725.

RENDEZVOUS RESTAURANT

The Rendezvous Restaurant offers a splendid view of the Osage Hills and cuisine ranging from Pecan Crusted Trout to Buffalo Burgers. Decadent desserts and a superb Sunday brunch are favorites. Open 11 a.m. to 2 p.m. Tuesday through Sunday. For information or to make reservations, call 918.596.2720.

GARDENS

Explore 23 acres of gardens at Gilcrease Museum. Historical themes enhance the museum collection by reflecting gardening styles and techniques in the American West — Pre-Columbian, Pioneer, Colonial, Victorian, and Rock Gardens. Explore the formal gardens, hike wooded trails, or view the



flowers, trees, and hills from the museum's panoramic Vista Room. In addition to five bronze sculptures on the museum grounds, visitors will discover sculptures of woodland animals carved from native trees. All formal gardens are accessible to the physically challenged. You are welcome to enjoy the gardens on your own or schedule a tour by appointment. Please call 918.596.2712 two weeks in advance for a guided garden tour.

LOCATION

Five Minutes from Downtown Tulsa

1400 Gilcrease Museum Road
Tulsa, OK 74127-2100
918.596.2700 Fax: 918.596.2759
Toll free 1.888.655.2278
Automated Information 918.596.2787
www.gilcrease.org



HOURS

Tuesday through Sunday 10 a.m. to 4 p.m.
The museum is closed every Monday and on Christmas Day.

Cover image: Charles Bird King, *Terre Kitaauhu*, 1829, oil on panel

Amenities panel image: Thomas Moran, *Acoma*, 1904, oil on canvas



GILCREASE MUSEUM

Where the American West unfolds.