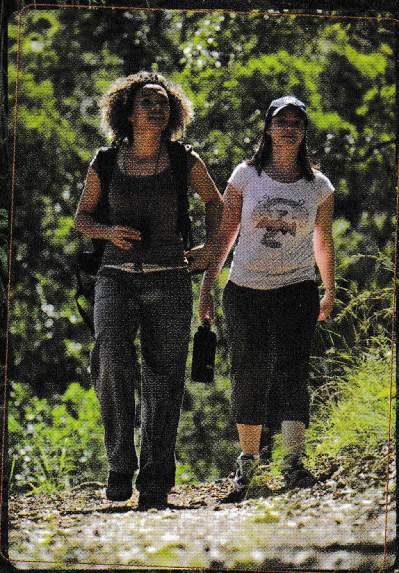


D'Aguilar Range

D'Aguilar National Park, Samford and Bunyaville conservation parks and surrounds



Park guide



... the bush on Brisbane's doorstep

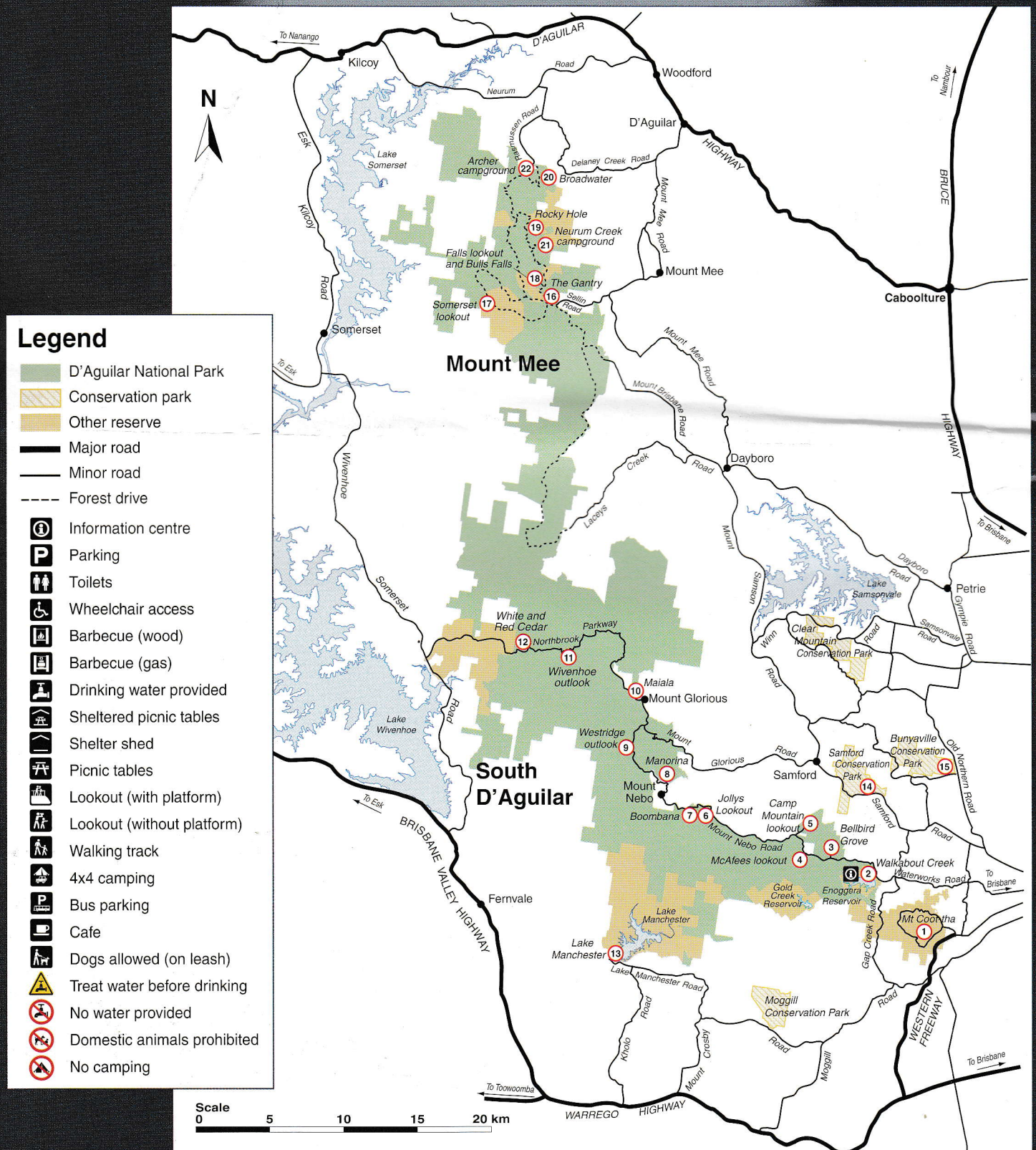
Discover remote gorges, sheltered pockets of subtropical rainforest, expansive forests and spectacular views; all within an hour's drive from Brisbane.

Locality map

Exploring the range

The D'Aguilar Range can be explored in two hours or over several days. Experience the park on foot, by horse or bicycle, or by car or motorbike. To get the most of a visit, this guide is divided into sections to help visitors tailor their experience. More detailed information is available in the park, from Walkabout Creek Visitor Centre or at www.nprsr.qld.gov.au.

Some activities in Queensland parks and forests require a permit, such as commercial, group or scientific activities. For licence and permit enquiries, email palm@nprsr.qld.gov.au or phone 1300 130 372.



Touring and places to visit

Embark on an adventure on one of several scenic tourist drives along the range and visit spectacular lookouts, parkland picnic areas and stunning natural features.

South D'Aguilar

To explore the southern end of the D'Aguilar Range, follow Mount Nebo Road (tourist route number 8) from The Gap. The road winds along the range to the mountain townships of Mount Nebo and Mount Glorious. Alternatively, the park can be reached via Samford along Mount Glorious Road (tourist route number 9). For those looking to circumnavigate the park, the Northbrook Parkway provides a circuit back through Brisbane Valley and Ipswich, or alternatively return via Samford.



Westridge outlook

Public transport access

For information on bus services, contact TRANSLink on 13 12 30 or visit www.translink.com.au.

1 Mt Coot-tha



Catch public transport or drive to the summit of Mt Coot-tha for expansive views over Brisbane city. Alternatively, embark on a short walk from any of the picnic areas at the foothills of the mountain or explore the Mt Coot-tha botanic gardens and planetarium. For further information or to obtain brochures or maps, please visit the Brisbane City Council website www.brisbane.qld.gov.au or phone 3403 8888.

2 Walkabout Creek



Walkabout Creek is located at 60 Mount Nebo Road, The Gap—12 km from Brisbane's CBD, and is easily accessible by public transport from the city. The complex includes a visitor and wildlife centre, function rooms and cafe.

The Walkabout Creek Visitor Centre and South East Queensland Wildlife Centre are open from 9.00 am to 4.15 pm every day, excluding some public holidays.

The function rooms at Walkabout Creek provide a unique and secluded setting for conferences, functions and wedding ceremonies, and adjoin the Green Tree Frog Café. To find out more about the wedding centre and cafe, visit www.walkaboutcreek.com.au.

Vehicle access

3 Bellbird Grove

10-minute drive from Walkabout Creek ²



Stop and enjoy a picnic or barbecue at this open, grassy day-use area and take a short walk along one of the walking tracks.

4 McAfees lookout

15-minute drive from Walkabout Creek ²



This lookout was named after the first settlers in this area and offers breathtaking views of Moreton Bay.

5 Camp Mountain lookout

15-minute drive from Walkabout Creek ²



On a clear day see amazing views of Moreton Bay and the Glass House Mountains from the lower lookout. Walk along the ridgeline to another lookout offering surprisingly close views of bustling Brisbane city.

6 Jollys Lookout

20-minute drive from Walkabout Creek ²



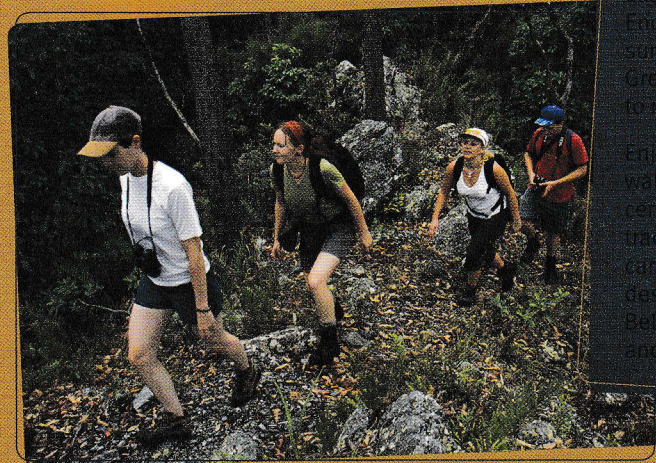
Named after William Jolly, Brisbane's first Lord Mayor (from 1925 to 1931), this lookout offers expansive views of Moreton Island, Brisbane Valley and the Glass House Mountains.

7 Boombana

20-minute drive from Walkabout Creek ²



Boombana, meaning 'trees in bloom', fits this area perfectly. During summer the lacebark tree *Brachychiton discolor* loses its leaves and keeps its large, pink, showy flowers to create a burst of colour through the greenery. Enjoy a barbecue lunch or take a walk through the forest.



Start at Walkabout Creek ² in The Gap and come face-to-face with the amazing diversity of native wildlife that lives in Queensland's national parks at the South East Queensland Wildlife Centre. With Enoggera Reservoir as the backdrop, and surrounded by tall eucalypt trees, the Green Tree Frog Café is a wonderful place to relax, grab a coffee and a bite to eat. Enjoy a stroll along one of the two short walking tracks that start from the visitor centre (Corymbia circuit and Araucana track), or journey up the mountain by car and visit a number of beautiful destinations within the park, including Bellbird Grove ³, McAfees lookout ⁴ and Boombana rainforest ⁷.

8 Manorina

30-minute drive from Walkabout Creek 2



Two walking tracks leave from here, offering walkers lush wet eucalypt forest and views of Samford Valley.

9 Westridge outlook

35-minute drive from Walkabout Creek 2



From the lookout perched on a high rocky outcrop, enjoy views over Lake Wivenhoe with the Great Dividing Range in the distance.

10 Maiala

45-minute drive from Walkabout Creek 2



This special area was the first piece of national park declared on the D'Aguliar Range. Originally cleared for a timber mill, some machinery and a remnant hoop pine plantation remain as evidence of Maiala's loud and laborious past.

11 Wivenhoe outlook

50-minute drive from Walkabout Creek 2



This outlook provides a picnic area with scenic views of Lake Wivenhoe.

12 White and Red Cedar

1-hour drive from Walkabout Creek via Northbrook Parkway 2



With open grassy areas and a picturesque stream running behind the day-use area, this is a great place to stop and enjoy the scenery.

13 Lake Manchester

1-hour, 20-minute drive from Walkabout Creek 2



Enjoy a picnic and take a short stroll to the lake's grassy shores.

14 Samford Conservation Park

15-minute drive from Walkabout Creek 2



Visit Ironbark Gully or Lomandra day-use areas off Samford Road and enjoy a natural woodland setting for picnics and barbecues.

15 Bunyaville Conservation Park

20-minute drive from Walkabout Creek 2



Discover a peaceful bush retreat with walking, mountain bike and horse riding trails close to Brisbane's CBD.



Connect with Nature

A wide range of ranger-guided activities are offered in various parks throughout Brisbane, the Gold Coast and hinterland, and Western Scenic Rim. Connect with Nature offers school holiday activities for adults, children and families as well as curriculum-based school educational activities for primary and secondary years. For more information on Connect with Nature, visit www.nprsr.qld.gov.au or phone 13 QGOV (13 74 68).

For information about school activities in Bunyaville Conservation Park, please visit the Bunyaville Environmental Education Centre website www.bunyavilleec.eq.edu.au or phone (07) 3353 4356. For information on the various environmental, cultural and recreational programs and activities offered by Brisbane City Council visit www.brisbane.qld.gov.au or phone 3403 8888.