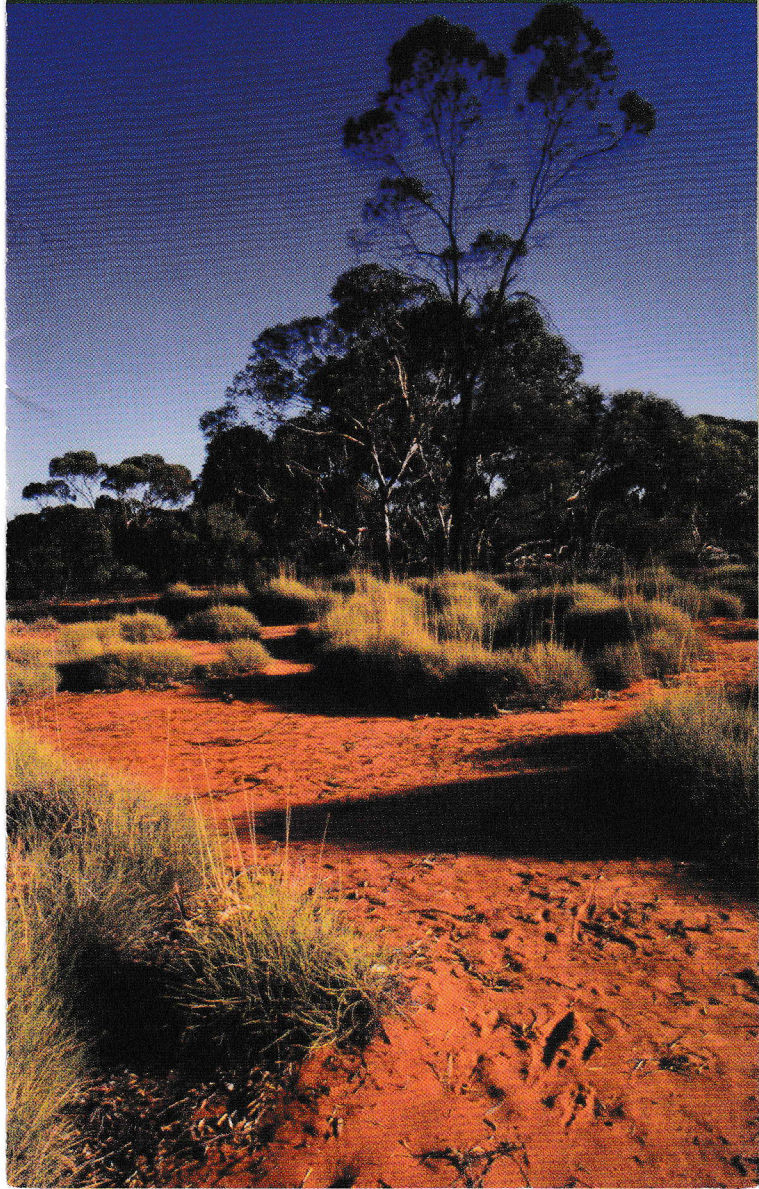
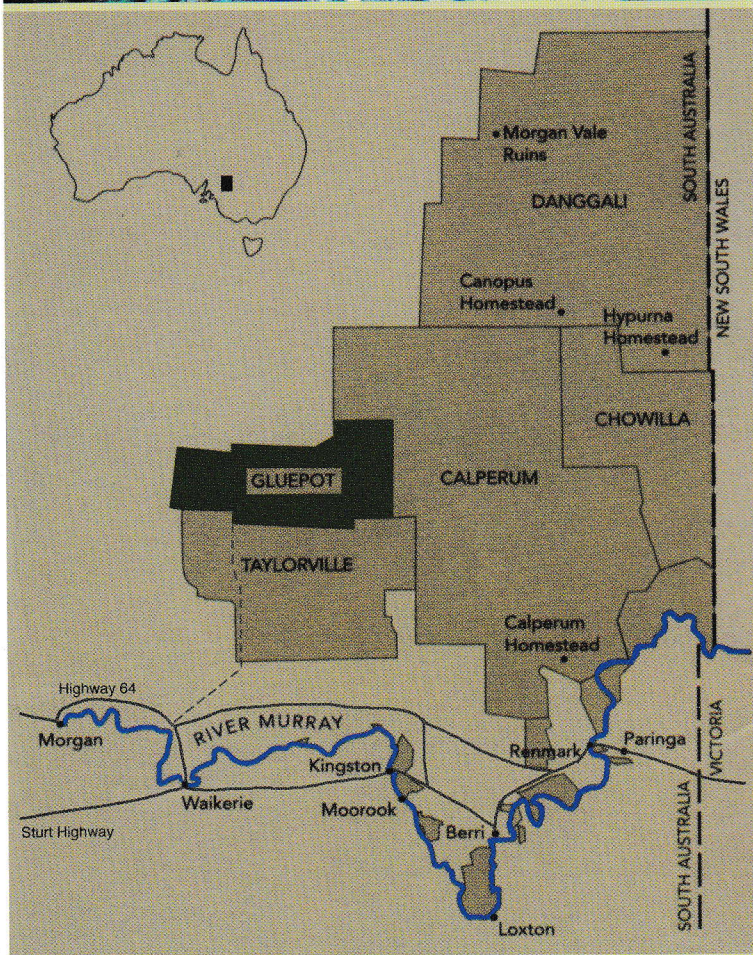




Birds Australia Gluepot Reserve





Location

Birds Australia Gluepot Reserve (54,390 ha) is 64km north of Waikerie and the Murray River in South Australia's Riverland district. It is open to visitors throughout the year.

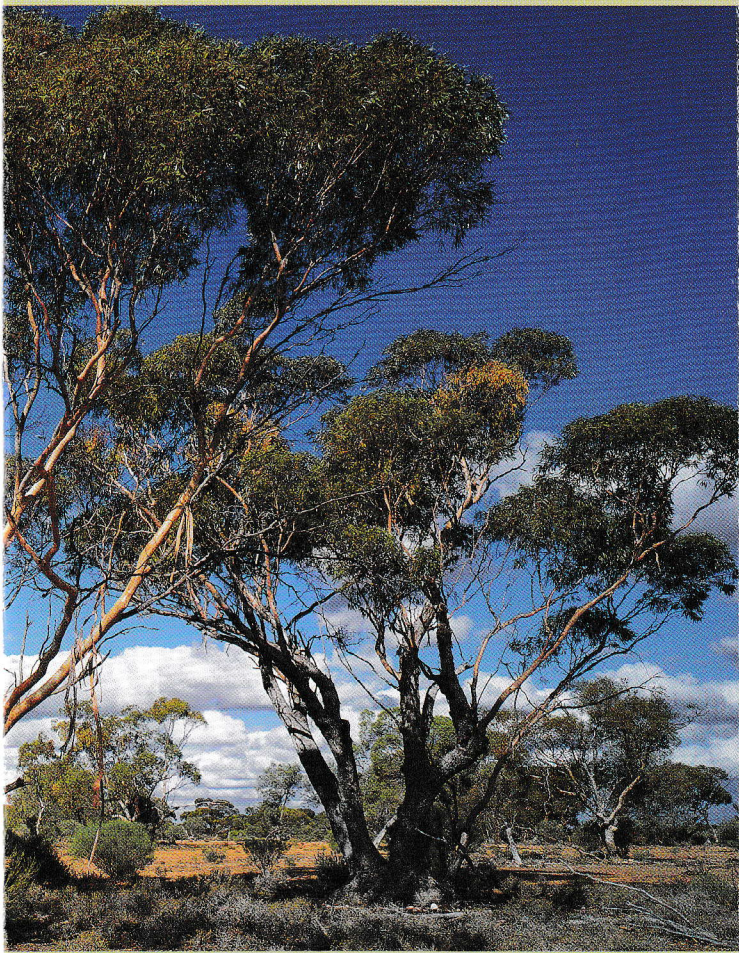
Climate

Average rainfall on Gluepot is very low (215 mm), with most falling in summer storms. The best time to visit is between mid-March and mid-November. In summer (December to February) temperatures can climb above 40°C on some days.

Wildlife

Gluepot Reserve is a bird watcher's paradise. Black-eared Miners, Red-lored Whistlers and Malleefowl, are among the 18 nationally threatened species which can be seen there regularly. Over 190 species of birds have been recorded in the first seven years.

The diversity of vegetation communities also support a wide variety of other wildlife. To date 53 species of reptile and 12 of bats have been recorded; some are nationally threatened. Initial surveys have revealed 264 plant species with 12% of them having a conservation rating in the Murray Mallee. Many of the trees are hundreds of years old with numerous hollows. There are few areas of the world that support such a concentration of threatened species.



For Visitors

The Reserve has an excellent, well-marked track system. Tracks are suitable for 2 WD vehicles and mountain bikes.

Three camping grounds provide well-spaced sites that are suitable for tents, caravans and vehicles.

14 marked walking trails lead the visitor through the variety of mallee and casuarina woodlands. Detailed maps, walking trail brochures, and lists of birds, animals and plants can be obtained from the Reserve Visitor Centre. Five elevated bird hides overlooking bird watering troughs have been established.

Visitors are encouraged to participate in research and monitoring projects being conducted at the Reserve. Volunteer Rangers are permanently on site and are happy to provide any further information.



Important Visitor Information

Visitors should aim to be self-sufficient. Before driving into the Birds Australia Gluepot Reserve you will need:

A key to go through two locked gates is available from the Waikerie Shell Service Station on payment of a \$10 refundable deposit - a map to the Gluepot entrance and will also be provided.

Travel: The drive from Waikerie to the Gluepot Homestead takes 1¼ hours. The Gluepot road commences at the corner of Lunn Road and is signposted all the way to the Homestead.

Water: Bring sufficient water to cover drinking, cooking and washing needs. Water is a scarce resource at Gluepot Reserve.

Cooking & Lighting: Only gas fires may be used. Gas bottles can be filled at the Waikerie Shell Service Station. Use gas or kerosene lamps. Take spare batteries for torches.

PLEASE NOTE: Wood fires are **not** permitted at any time.

Fuel: Vehicle fuel is available at the Waikerie Shell Service Station. Fuel is **not** available at Gluepot Reserve.

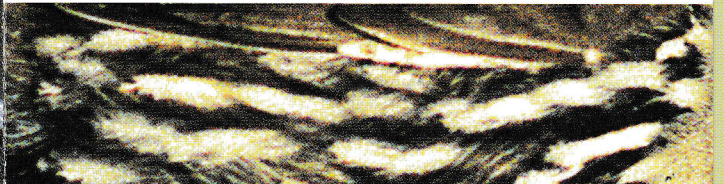
Food: Fruit fly control programs prevent fresh fruit and vegetables being carried into the Riverland district. These food items may be purchased from Riverland towns such as Renmark, Waikerie or Morgan.

Garbage Bags: Visitors must remove their own rubbish from the Reserve.

Equipment: Bring binoculars, field guides, camera, notebook, compass, GPS and vehicle spares. Bring a puncture repair kit for bikes.

Protective Clothing: Hats, sun-screen and sturdy footwear are important. Summer days can be over 40°C and winter nights can be below 0°C. Plan your clothing needs according to the season.

PLEASE NOTE: Firearms and pets are **not** permitted on the Reserve.



Entry and Camping Fees

Day Visitors: \$5 per vehicle
Campers: \$10 per vehicle per night

Commercial Tours

Day Visit: \$2.50 per person
Campers: \$5 per person per night

Donations

The donations received from visitors, campers and supporters are vital for managing Gluepot Reserve effectively for biodiversity conservation. All workers at the Reserve are volunteers, so your donation will go undiluted to its conservation targets.

Tax-deductible donation forms are available at the Reserve Visitor Centre or by contacting the Reserve Treasurer at: PO Box 345, Waikerie SA 5330

All donations over \$150 will be acknowledged at the Michael Hyde Visitor Centre.

Courses

Nature based education courses and workshops will be offered from 2005 onwards. Courses of 1-2 days duration will be led by experienced facilitators.

Guided Tours

Guided tours of Gluepot are provided by highly experienced members of the Reserve for a reasonable fee. Bookings are required well in advance of your arrival.

Environmental Education Centre

The Environmental Education Centre is available for hire for meetings and seminars. The Centre is equipped with the latest audio-visual equipment

Please contact Reserve Rangers for details.

Photographs courtesy of David Neilson, Graeme Chapman and Duncan MacKenzie. Design by Design Ark. Produced September 2004.

Objectives

Birds Australia purchased Gluepot Station in 1997, with the aim of effectively managing a large, internationally significant area for biodiversity conservation. Scientific research and monitoring, environmental education, ecotourism and community involvement are important activities at the Reserve.

Reserve Status

Gluepot Reserve is part of the largest block of intact mallee left in eastern Australia, and thus the viability of populations of threatened species is high. The Reserve is listed on the Register of the National Estate, and is part of Australia's National Reserve System and the Bookmark Biosphere Reserve. Gluepot Reserve is also the largest area of land covered by a Heritage Agreement in South Australia. The Reserve obtained additional protection in 2004 under the Commonwealth EPBC Act, as 'critical habitat'.

Reserve Closure

Birds Australia, through its Management Committee and Rangers, reserves the right to close Gluepot Reserve and to require visitors to leave if their safety is threatened (eg on days of extreme fire danger). Parts of the Reserve may be closed during feral animal control programs. The Ranger may close the Reserve's roads after heavy rain.

Contact Reserve Rangers

PO Box 345, Waikerie SA 5330
Telephone/Facsimile: (08) 8892 8600
Email: gluepotreserve@bigpond.com
For further information on the Reserve visit the website at: www.riverland.net.au/gluepot

Birds Australia

ABN 87 004 076 475

Birds Australia is Australia's premier bird conservation organisation and the nations largest scientific society concerned with wildlife.

This brochure
sponsored by

