

OATLANDS

Tasmania

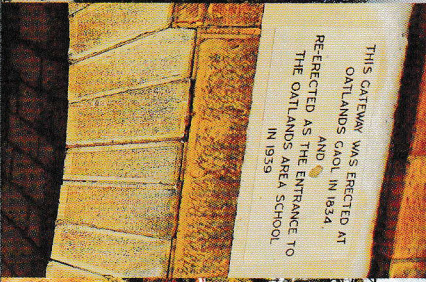
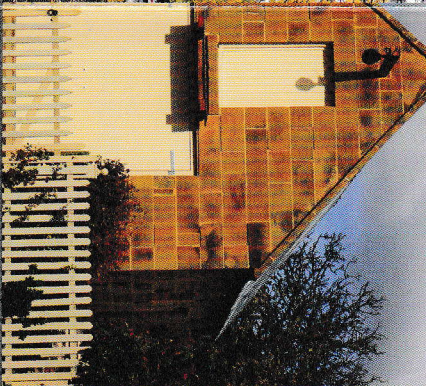
These walls can talk...
Authentic Living History



Oatlands

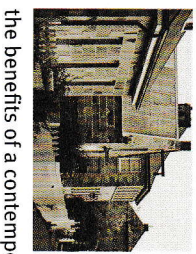
TASMANIA





Welcome to Oatlands

Oatlands is unique.



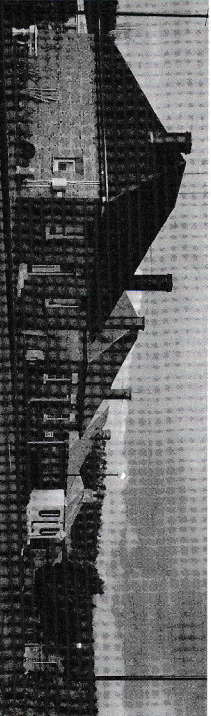
Seamlessly blending past and present, and offering visitors the opportunity to connect with their heritage in a welcoming, authentic environment whilst enjoying all the benefits of a contemporary centre.

Boasting the largest collection of sandstone Georgian buildings in Australia, the village and landscape of Oatlands offers a rare glimpse into our colonial history and the settlement of Van Dieman's Land.

The story of Oatlands combines the convict and military system, settlement by gentry farmers, colonial entrepreneurs looking to make their fortune and notorious bushrangers in a way that is unique in Australia. Walk in the footsteps of the past and hear the stories of the people, the places and the birth of Australia today with one of our self guided or professionally guided walking tours.

Original buildings have been reinvented as retail outlets, galleries, bakeries, cafes and accommodation. Uncover a hidden treasure at one of Oatlands great antique shops, meet local artisans and learn the stories behind their craft or relax by the lake.

Today, the township of Oatlands, with a population of approximately 600, continues to be the rural service centre of the Southern Midlands.



Heritage and History

Colonialists first started settling at Oatlands in the 1820's, a decade before the founding of Melbourne.

As a major location for colonial administration, works and a service centre, Oatlands saw much activity and building. One of the oldest Supreme Courthouses in Australia was built at Oatlands by convict labour in 1829.

The Courthouse and other colonial buildings demonstrate the skills brought to the country by the convicts and are open for inspection.



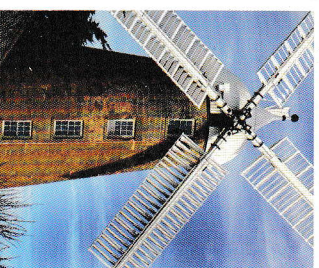
Accommodation

Experience outstanding colonial accommodation and hospitality from great Bed and Breakfasts to unique and cozy self-contained historic cottages.

Tours

Guided: Miller's Way, Executioners Trail, The Town, Supreme Court House;
Self Guided: Callington Mill and The Military Precinct; Casaveen

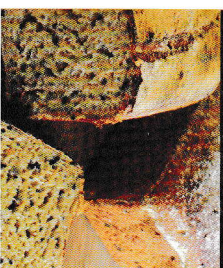
Callington Mill



The Callington Mill (1837) has recently been restored and is the only working example of a Lincolnshire style windmill in the Southern Hemisphere. Enjoy the experience of being in the mill as the huge sails are gently turned by the wind and the stones are rolling, grinding grain into flour.



Stay a while, refresh yourself and enjoy freshly baked products made from flour ground in the traditional way.



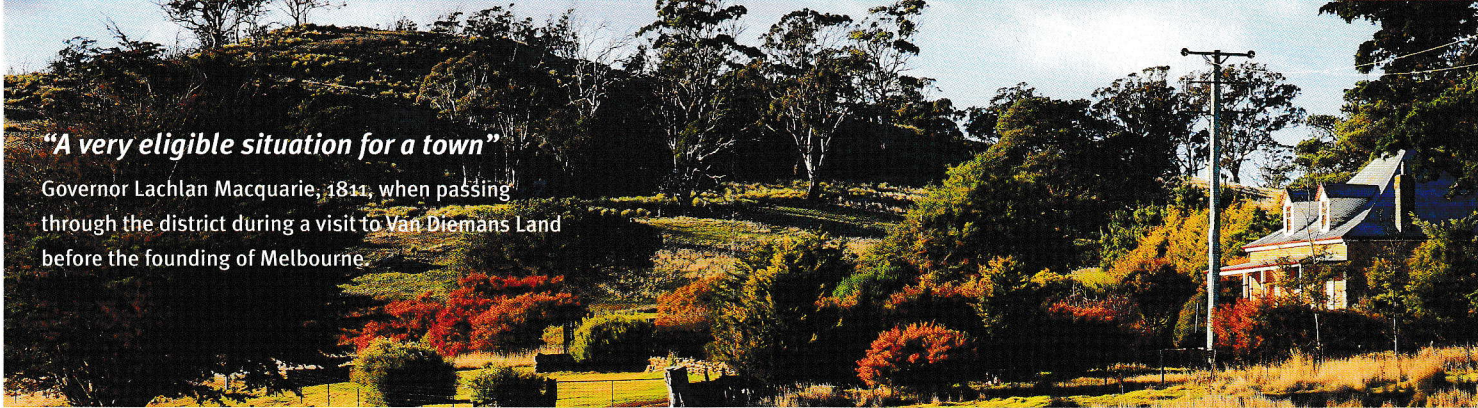
Artisans in Oatlands are plentiful – using local supplies and quality ingredients to create pottery, unique Tasmanian knitwear, children's clothing, jewelry, paintings, fabric and baked goods — and that's just the start.

Enjoy browsing the collectibles shops, talking with these gifted artisans and learning their secrets

Services & Facilities

Online Access Centre, State Library, Health Centre with 24 hour Emergency Services, Two Supermarkets, Post Office, Hairdresser, Veterinary Clinic and a Newsagency.





“A very eligible situation for a town”

Governor Lachlan Macquarie, 1811, when passing through the district during a visit to Van Diemens Land before the founding of Melbourne.

Perfectly positioned halfway between Hobart and Launceston, Oatlands offers visitors a delightful combination of history, food, craft and leisure, making it the must see ‘destination on the Heritage Highway’.



Oatlands is around an hours drive from Hobart and 1 hour and 20 minutes from Launceston along the Heritage Highway (A1).



For further information or to book a tour, please contact:

Oatlands Heritage Highway Visitor Centre

Mill Lane, Oatlands

03 6254 1212

heritage@southernmidlands.tas.gov.au

www.oatlands-tasmania.com.au

