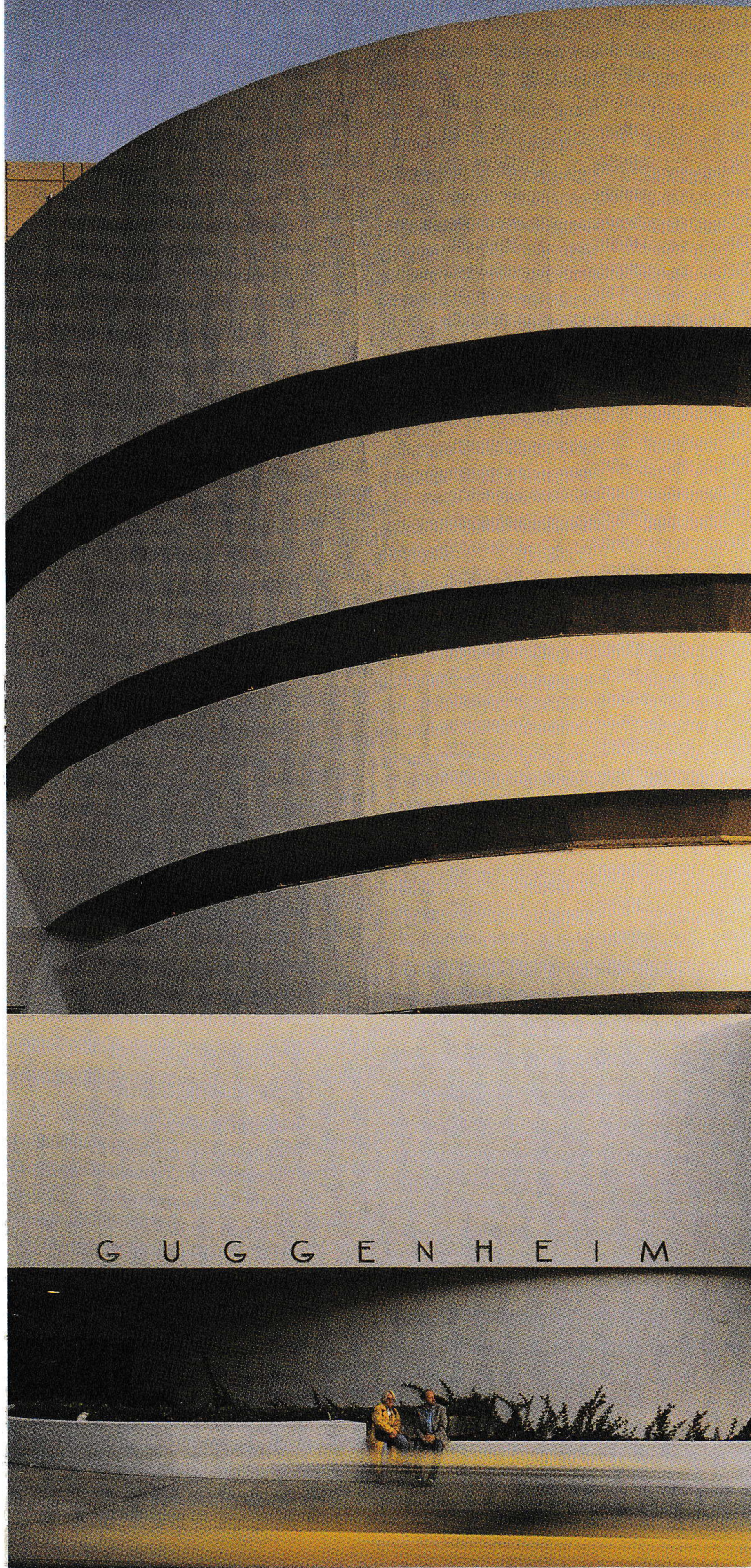
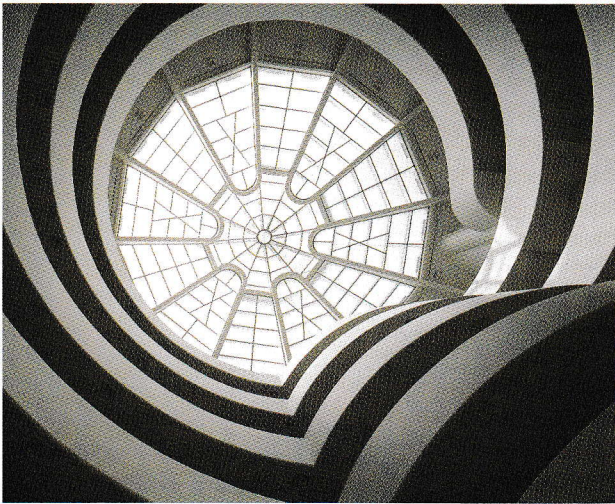


GuggenheimMUSEUM



Solomon R. Guggenheim Museum

Home to one of the world's finest collections of Modern and contemporary art, the Solomon R. Guggenheim Museum is itself a masterpiece. Designed by Frank Lloyd Wright and completed in 1959, the building is a New York City landmark.



A Unique Way to Experience Art

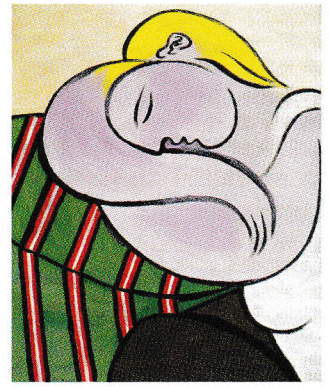
Wright's vision of a museum with an "extended, expansive, well-proportioned floor space from bottom to top . . . no stops anywhere . . . gloriously lit from above" was revolutionary in his time and remains so in ours. As you walk along the grand ramp that curves from the ground up toward the dome, you'll see the Guggenheim's special exhibitions, which feature important artists from the 19th century through the present. Also on view are masterpieces from the permanent collection by noted artists, such as Brancusi, Braque, Calder, Chagall, Delaunay, Giacometti, Kandinsky, Klee, Léger, Miró, Picasso, and van Gogh.

Special Exhibitions

The 2003–04 exhibition schedule includes artists such as James Rosenquist, Daniel Buren, and Constantin Brancusi. To confirm the exhibition calendar, visit www.guggenheim.org or call 212 423 3500.

Guggenheim Café

Enjoy sweet and savory fare ranging from soups, salads, and sandwiches to hot entrees and a wide selection of desserts. This Frank Lloyd Wright–designed setting is an excellent choice for breakfast, lunch, afternoon tea, or a light dinner.



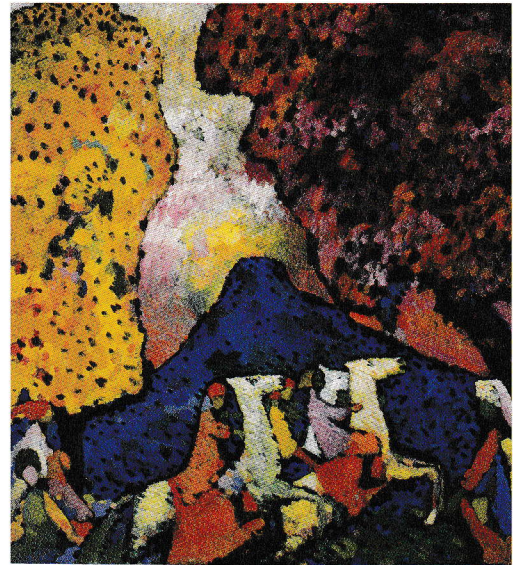
Pablo Picasso, Woman with Yellow Hair, Dec. 1931. Oil on canvas, 39 3/8 x 31 1/8 inches. Thannhauser Collection, Gift, Justin K. Thannhauser, 1978. © 2001 Estate of Pablo Picasso/Artists Rights Society (ARS), New York.

Guggenheim Store

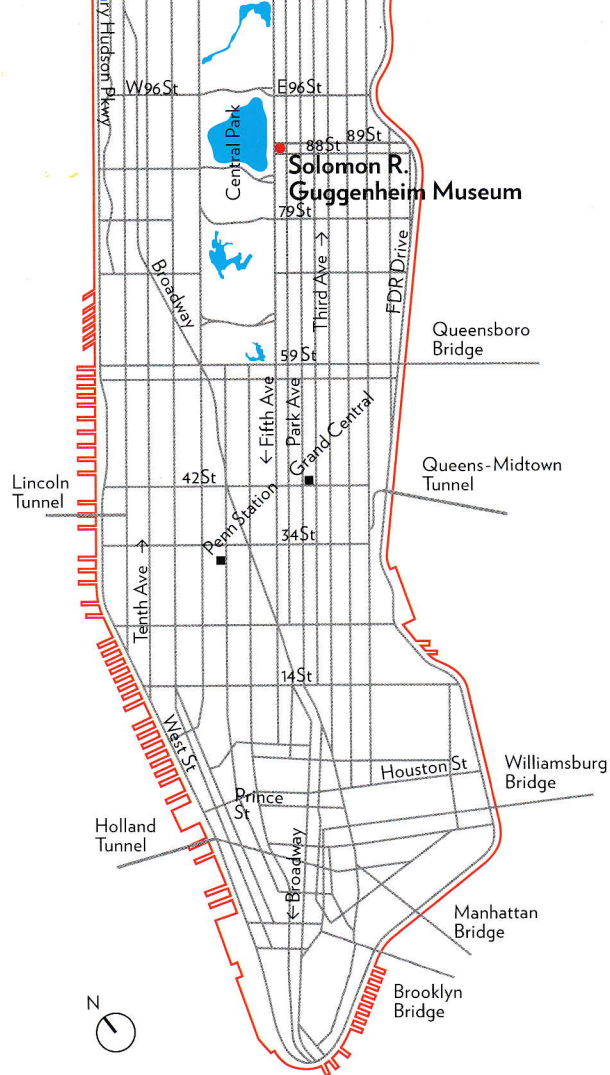
An impressive selection of art publications, posters, T-shirts, accessories, note cards, and more is available at the Guggenheim Store.

Visitors with Disabilities

The museum is wheelchair accessible; manual-wheelchair users may need assistance. Visitors with disabilities may call 212 423 3618 for more information.



Vasily Kandinsky, Blue Mountain, 1908–09. Oil on canvas, 41 1/4 x 38 inches. Gift, Solomon R. Guggenheim, 1941. © 2001 Artists Rights Society (ARS), New York/ADAGP, Paris.



Solomon R. Guggenheim Museum

5th Ave at 89th St

Saturday–Wednesday, 10 AM–5:45 PM

Friday 10 AM–8 PM

Closed Thursday

Directions

Bus: M1, M2, M3, M4 on Madison or 5th Ave

Subway: 4, 5, or 6 to 86th St

Information: 212 423 3500

www.guggenheim.org

visitorinfo@guggenheim.org