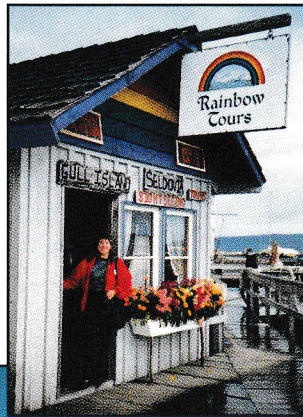


**Cruise Kachemak Bay
Homer, Alaska**

RAINBOW TOURS



Enjoy the bay aboard the
M/V Rainbow Connection

67' long, 18.6' wide, 99 passenger capacity
Features a fully automated Naiad Roll Control System for the
most comfortable ride possible.

See it all with

RAINBOW TOURS

Located on the Cannery Row
Boardwalk, Homer Spit

(907) 235-7272

FAX (907) 235-7446

P.O. Box 1526 Homer, Alaska 99603



Gull Island Bird Rookery



Tour 001 Excellent tour for photography with thousands of nesting sea birds. Horned and Tufted puffins, Black Leg Kittiwakes, Red Faced and Pelagic Cormorants, Common Murres, Pigeon Guillemots and Glaucous Wing Gulls. One and a half hour narrated cruise to Gull Island and Peterson Bay. Departs twice daily: 9 am or 4:30 pm.
Best deal in Alaska!! All fares \$10

Natural History Tour: Peterson Bay Center for Alaskan Coastal Studies

Tour 002 Join area naturalist for a full day across the bay. Marine life, sea bird rookery, tide pool studies, sub-Arctic rain forest, flora and fauna, geology. A photographer's dream world. Departs daily at 9 am, returns at 6 pm.
Adults: \$49 Seniors: \$39 Juniors: \$29



Seldovia Sight-Seeing Cruise

Tour 003 Let Rainbow Tours deliver you to one of the oldest settlements in Alaska. Cruise the shores of Kachemak Bay State Park, Eldred Passage, Yukon Island, McDonald Spit, then on to Seldovia. Whales, sea otters, sea birds, seals, porpoise and bald eagles are frequently spotted throughout this fully narrated cruise. Ample free time in Seldovia. Departs daily at 11 am, returns at 4 pm.
Adults: \$36 One-way: \$20
Seniors: \$32 One-way: \$18
Juniors: \$20 One-way: \$10



Kachemak Combo

Tour 004 See it all in one day!
Combines Gull Island, Peterson Bay and Seldovia. Departs daily at 9 am or 11 am.

Center for Alaska Coastal Studies

Natural History Tour

Date 6-6-93 Total 103.39



RAINBOW TOURS

P.O. Box 1526, Homer, Alaska 99603
907/235-7272

