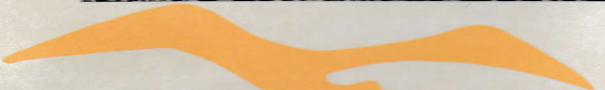


# DISCOVER THE NORMAN BIRD SANCTUARY



## A WILDLIFE REFUGE & ENVIRONMENTAL EDUCATION CENTER



## ABOUT THE NORMAN BIRD SANCTUARY

The Norman Bird Sanctuary protects 325 acres of land encompassing a variety of ecosystems including ridges, forests, thickets, fields, ponds, streams, salt marsh and sandy beach. These environments, comprised of both native and non-native plant species, provide habitat for a rich diversity of life. While you are visiting, you are encouraged to observe nature, take photographs, sketch and paint, walk the trails and enjoy the quiet spaces of the Sanctuary.

PLEASE RESPECT THE FLORA AND FAUNA OF THIS BEAUTIFUL OPEN SPACE BY OBSERVING THE FOLLOWING RULES:  
There is NO dog walking, smoking, jogging, bike riding, ball playing, motor vehicles, horses, kite flying, littering or collecting of any kind allowed on the refuge grounds.

## OUR MISSION AND LEGACY

The Sanctuary was established in 1949 at the bequest of Mabel Norman Cerio. The organization's mission, under the charge of her will, was to maintain 235 acres of land, a portion of her original Paradise Farm "for the propagation, preservation and protection of birds, and where birds and bird life may be observed, studied, taught, and enjoyed by lovers of nature and by the public generally so interested in a spirit of humanity and mercy."

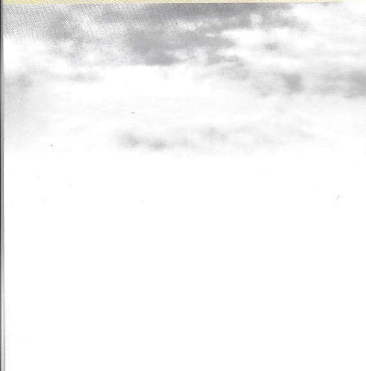
Over the years, as the Sanctuary has grown, our mission has widened to encompass greater goals: to protect the diversity of native plant and animal habitats; to provide environmental education programs to a diverse audience, with respect to age, economic and social status, and physical ability; and to advocate for the preservation of open space.



## EDUCATIONAL PROGRAMS

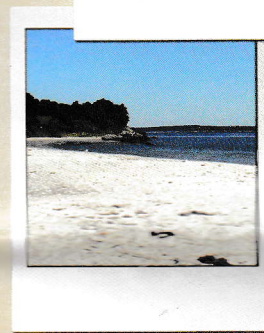
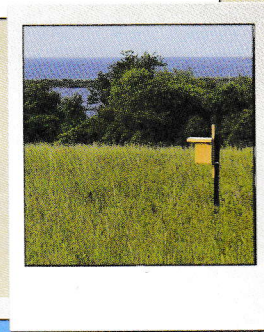
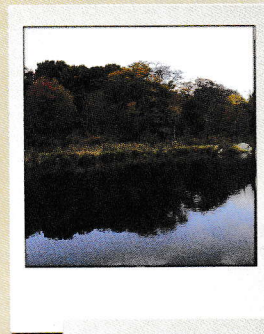
The Sanctuary is a leader in environmental education, providing innovative and thought provoking science programming for schools, community groups, adults and families. We continue to strive to find ways to share our extraordinary natural resources, science expertise and educational programming with children and adults from all walks of life. Programs include:

- Natural History Walks, Lectures & Workshops
- Field Trips and Outreach for schools
- After-school Programs
- Summer & Vacation Camps
- Scout Programs & Birthday Parties



## HABITAT MANAGEMENT AND CONSERVATION:

Rhode Island is a small state with impressive natural environments including fields, forests, freshwater ponds, wetlands and seashore. The Norman Bird Sanctuary encompasses all of these different habitats and is accessible for the public to enjoy, explore and discover the wonders of the natural world. The refuge has a long history of protecting and preserving critical habitats. NBS has developed a detailed plan to restore and preserve the native habitats on our site.



**245 ACRES OF FOREST**  
**+ 50 ACRES OF GRASSLAND**  
**+ 20 ACRES OF MARSH**  
**+ 10 ACRES OF BEACH & DUNE**  
**= 325 ACRES OF THE NORMAN BIRD SANCTUARY**

## MEMBERSHIP

Join the Norman Bird Sanctuary and become our partner in education and conservation. Your membership dues directly fund our year-round efforts to provide innovative environmental education programs and promote environmental stewardship across the state. Membership benefits include the following:

- Free access to our trails
- Discounts from our "Birds of A Feather" partner businesses
- A 10% discount in our Barn Owl Shop
- Receive our bi-annual newsletter, The Flyer
- Special event invitations
- Discounted rates for our educational programs

To join or give family and friends the gift of membership, please pick up a membership envelope at the Welcome Center desk or visit our website.



**JUST MINUTES FROM THE BEACHES AND DOWNTOWN NEWPORT**  
583 Third Beach Road • Middletown, RI 02842  
401-846-2577 • [info@normanbirdsantuary.org](mailto:info@normanbirdsantuary.org)  
[www.normanbirdsantuary.org](http://www.normanbirdsantuary.org)



# TRAIL GUIDE

## PLEASE REMEMBER

- Keep to the marked trails
- Restrict picnics to the orchard beside the barn.
- Refrain from collecting anything
- No bicycles or dogs on the trails.

## LEGEND

FOREST	
OPEN FIELD	
WETLAND	
SHRUB GROWTH	
DUNE	
SANCTUARY BOUNDARY	
TRAIL	
UNIVERSAL ACCESS	
STREAM	
ROAD	
DIFFICULT	

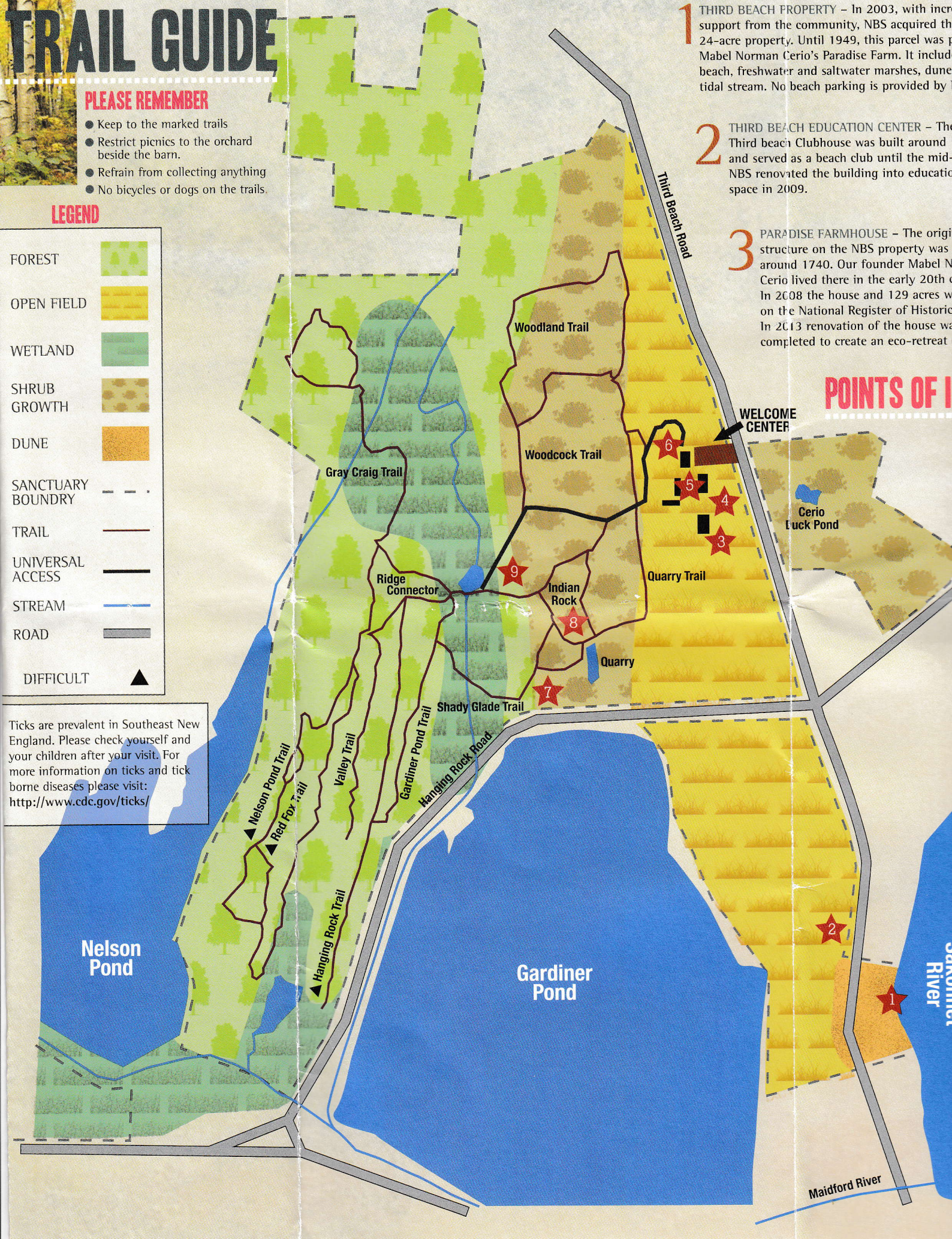
Ticks are prevalent in Southeast New England. Please check yourself and your children after your visit. For more information on ticks and tick borne diseases please visit: <http://www.cdc.gov/ticks/>

**1** THIRD BEACH PROPERTY – In 2003, with inc support from the community, NBS acquired the 24-acre property. Until 1949, this parcel was p Mabel Norman Cerio’s Paradise Farm. It includ beach, freshwater and saltwater marshes, dune tidal stream. No beach parking is provided by

**2** THIRD BEACH EDUCATION CENTER – The Third beach Clubhouse was built around and served as a beach club until the mid- NBS renovated the building into education space in 2009.

**3** PARADISE FARMHOUSE – The origi structure on the NBS property was around 1740. Our founder Mabel N Cerio lived there in the early 20th o In 2008 the house and 129 acres w on the National Register of Historic In 2013 renovation of the house wa completed to create an eco-retreat

## POINTS OF I



Maidford River